

SurroundVideo® Megapixel IP Cameras



 **Arecont Vision**
megapixel technology...
beyond imagination



180° and 360° Coverage with Exceptional Resolution – SurroundVideo®

H.264 SurroundVideo® Day/Night series megapixel cameras provide an all-in-one solution for wide area video surveillance. Available in 180° and 360° panoramic configurations, SurroundVideo® cameras feature 8 megapixel panoramic dual encoder (H.264 and MJPEG) cameras housed in a vandal resistant IP66 dome. A single SurroundVideo® panoramic camera can replace up to 24 conventional cameras with the ability to zoom into multiple regions of interest. Their return on investment is easily measured any way you view it.

Highlighted Features:

- 8 megapixel with 180° and 360° panoramic configurations
- All-in-one vandal resistant H.264/MJPEG Day/Night solution
- Easily adjustable 2-axis gimbal
- +/- 10° mechanical sensor tilt adjustment (AV8365DN)
- Privacy masking for multiple regions
- Extended motion detection grid
- Superior low light performance (1/2" CMOS sensor)
- 2 megapixel resolution (1600 x 1200) per sensor – 6400 x 1200 total
- IP66 weatherproof standard
- Various mounting options (surface, wall, pendant, in-ceiling)

Higher Resolution + Panoramic Field of View = Greater ROI

An area typically requiring multiple PTZ cameras or multiple fixed cameras can be covered with a single AV8185DN panoramic camera. It delivers comprehensive coverage with forensic detail – all without the need for an operator or control software. A highly cost-efficient solution, the AV8185DN virtually obsoletes the need and related expenses of PTZ cameras.

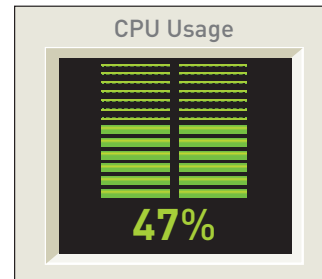
For applications that require critical detail like license plate recognition, combine the AV8185DN panoramic camera with single sensor megapixel cameras at entrance and exit points.



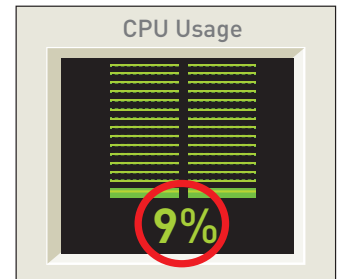
Compliant H.264 Compression

- Compliant implementation of H.264 allows full frame rates and full resolution without sacrificing image quality
- H.264 and MJPEG dual compression support with simultaneous streaming
- Decreases the CPU load both at the client (decompression) side and the server/storage side
- Lower bandwidth and storage relative to MJPEG
- Bit rate control to maintain desired bandwidth and storage size
- Real Time Streaming Protocol (RTSP) allows for compatibility with media players such as Apple QuickTime®, VLC and others

H.264 Decompression (example)

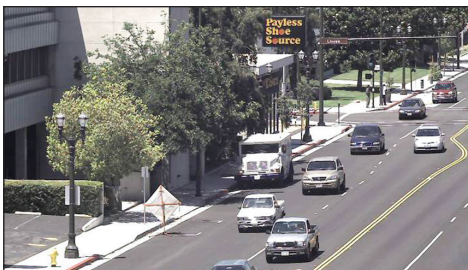


2MP with live video in **MJPEG**

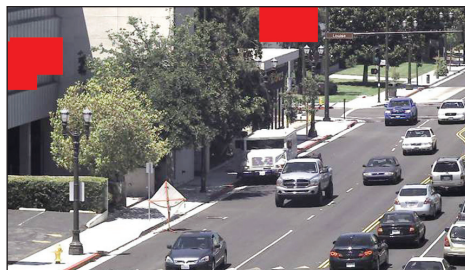


2MP with live video in **H.264**

Privacy Mask



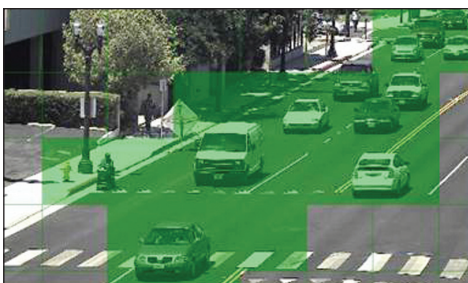
NORMAL



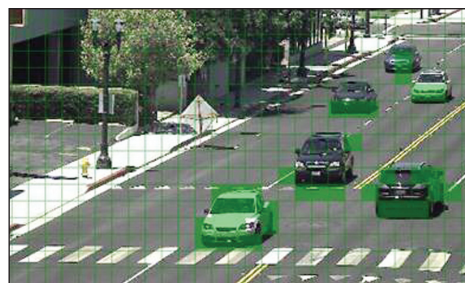
MASKED

Allows the ability to select multiple regions of an arbitrary shape and block the video. It is supported by both HTTP and TFTP protocols, and features an on-board web interface.

Extended Motion Detection



64 ZONES



1,024 ZONES

Offers a higher granularity grid of 1,024 distinct motion detection zones in contrast to the 64 zones in previous versions.



Product Comparison

Model	Sensor	Resolution	Max Frame Rate @ 3200 x 600	Max Frame Rate @ 6400 x 1200	Minimum Illumination	H.264	MJPEG	Day/Night	IP66	Vandal Resistant	Heater
AV8185DN	4x2MP	6400x1200	22fps	6 fps	Color: 0.2 Lux Day/Night: 0 Lux, IR Sensitive	•	•	•	•	•	•
AV8365DN	4x2MP	6400x1200	22fps	6 fps	Color: 0.2 Lux Day/Night: 0 Lux, IR Sensitive	•	•	•	•	•	•
AV8185DN-HB	4x2MP	6400x1200	22fps	6 fps	Color: 0.2 Lux Day/Night: 0 Lux, IR Sensitive	•	•	•	•	•	•
AV8365DN-HB	4x2MP	6400x1200	22fps	6 fps	Color: 0.2 Lux Day/Night: 0 Lux, IR Sensitive	•	•	•	•	•	•

Configurations

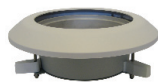


In Ceiling Mount
(shown with AV8365DN)



Surface Mount
(shown with AV8185DN)

Accessories



SV-FMA
Flush Mount Adapter



SV-WMT
Wall Mount



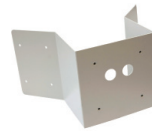
MD-PMA
Pole Mount Adapter



MV-EBA
Electrical Box Adapter



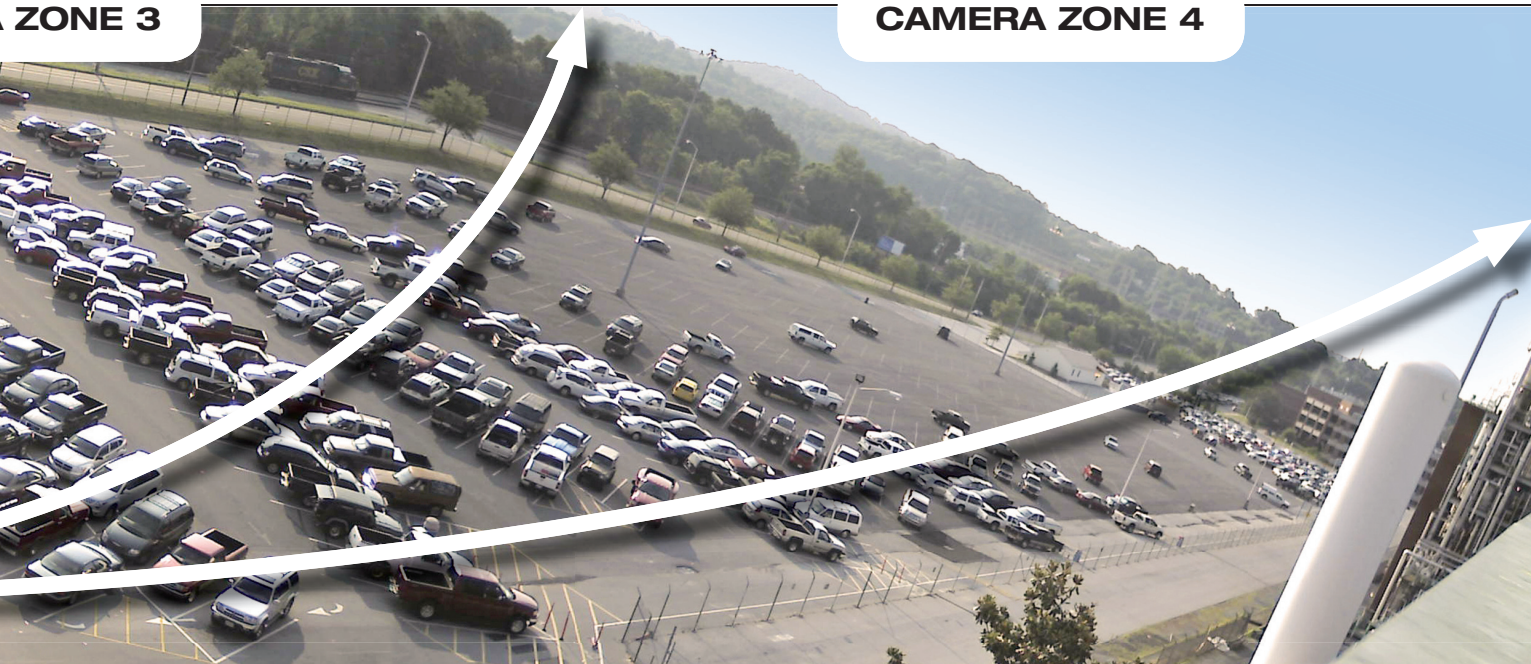
SV-CMT
Pendant Mount



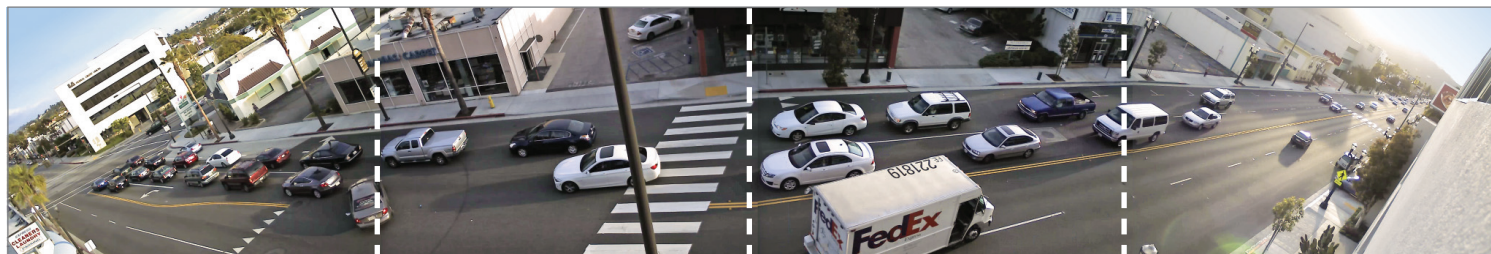
MD-CRMA
Corner Mount Adapter

ZONE 3

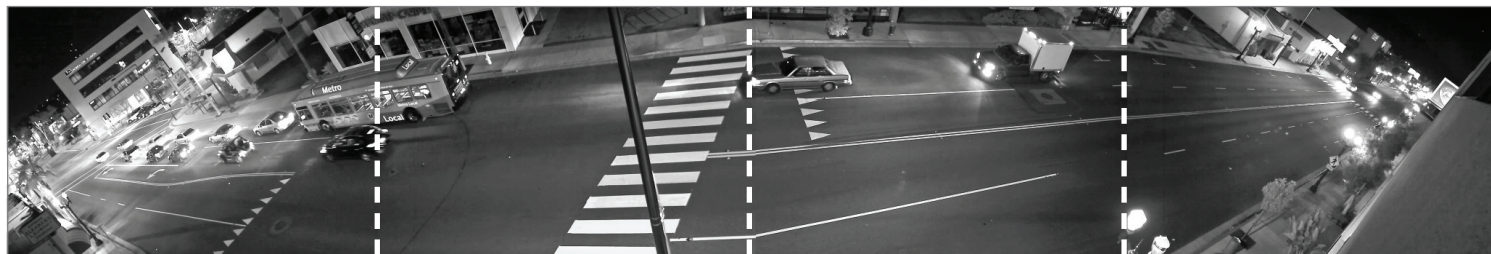
CAMERA ZONE 4



Enhanced Low Light Performance



DAY



NIGHT

The latest additions to the SurroundVideo® family are the new Day/Night panoramic cameras which provide comprehensive field of view and excellent forensic detail in low light. The cameras' Day/Night switchers simultaneously transition for enhanced low light or night time performance based on the least illuminated sensor. For extreme low light environments, IR illumination can be added.



Arecont Vision
megapixel technology...
beyond imagination

Corporate Headquarters

Arecont Vision
425 East Colorado Street, 7th Floor
Glendale, CA 91205
+1 (818) 937-0700
www.arecontvision.com



Global Sales Team

North America:

avsales@arecontvision.com

Latin America:

latam.sales@arecontvision.com

Asia Pacific:

Asia Pacific:
apac.sales@arecontvision.com

Australia / New Zealand:
anz.sales@arecontvision.com

China:
china.sales@arecontvision.com

Malaysia, Indonesia, Vietnam,
Philippines, Singapore, Thailand:
seasia.sales@arecontvision.com

Taiwan, Korea, Japan, Hong Kong, Mongolia:
eastasia.sales@arecontvision.com

Europe:

Europe:
europe.sales@arecontvision.com

Belgium, Netherlands, Luxemburg:
benelux.sales@arecontvision.com

Denmark, Finland, Iceland, Norway, Sweden:
nordic.sales@arecontvision.com

Eastern Europe:
easterneurope.sales@arecontvision.com

France:
france.sales@arecontvision.com

Germany, Austria, Switzerland:
dach.sales@arecontvision.com

Italy:
italy.sales@arecontvision.com

Russia:
russia.sales@arecontvision.com

Spain and Portugal:
iberia.sales@arecontvision.com

United Kingdom
uk.sales@arecontvision.com

Middle East / Africa :

Israel:
israel.sales@arecontvision.com

Middle East / North Africa:
mena.sales@arecontvision.com

Central & South Africa:
africa.sales@arecontvision.com



Arecont Vision is the leading manufacturer of high-performance megapixel IP cameras and associated software. All Arecont Vision products are made in the USA.



 **Arecont Vision**
megapixel technology...
beyond imagination

www.arecontvision.com • 1-877-CAMERA-8